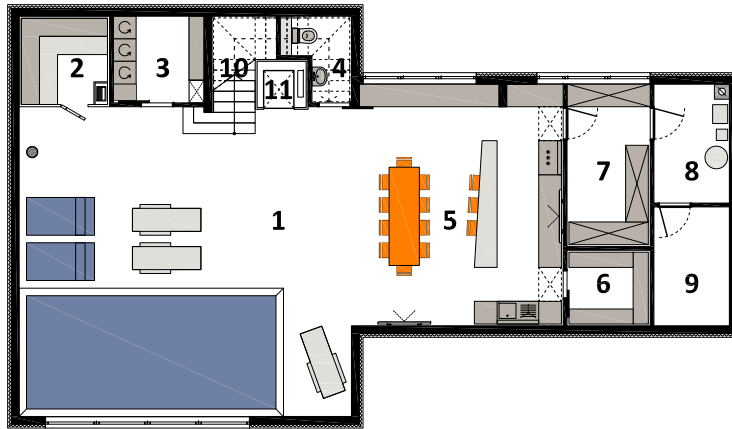


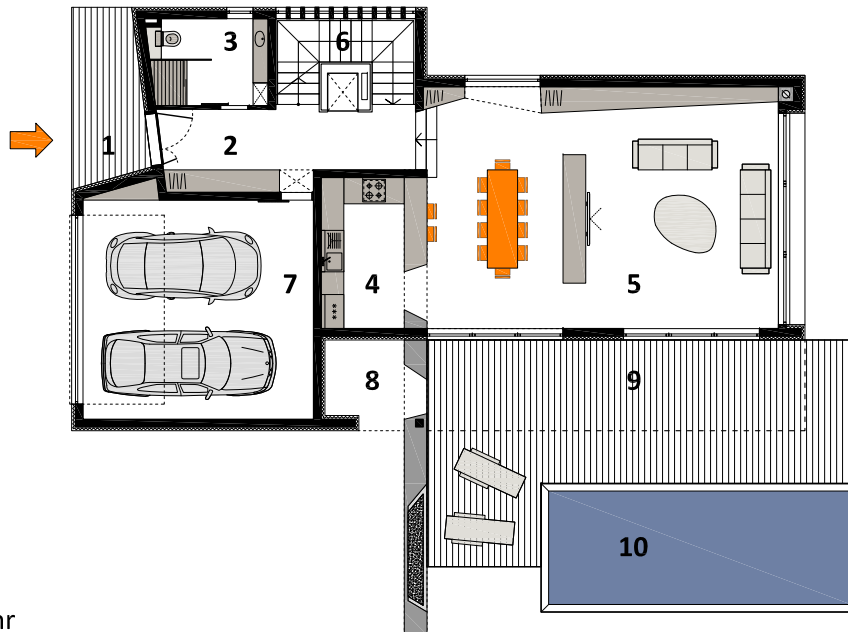


BASEMENT



BASEMENT	brutto (m ²)	koef.	NKP (m ²)
1 spa	71.90	1.00	71.90
2 sauna	5.80	1.00	5.80
3 laundry	5.50	1.00	5.50
4 toilet	3.30	1.00	3.30
5 tavern	34.40	1.00	34.40
6 winery	4.40	1.00	4.40
7 storage	9.50	1.00	9.50
8 bolier	6.30	1.00	6.30
9 pool technology	6.30	1.00	6.30
10 staircase (visina < 1m)	2.10	0.00	0.0
staircase (visina 1-2m)	2.60	0.75	1.95
11 elevator	1.90	1.00	1.90
BASEMENT TOTAL	154.00		151.25

GROUND FLOOR



GROUND FLOOR	brutto (m ²)	koef.	NKP (m ²)
1 porch	8.40	0.50	4.20
2 wardrobe/corridor	13.40	1.00	13.40
3 bathroom	7.10	1.00	7.10
4 kitchen	11.00	1.00	11.00
5 dining/living	60.00	1.00	60.00
6 staircase/elevator	8.70	1.00	8.70
7 garage	36.00	0.75	27.00
8 storage	5.40	0.75	4.05
9 covered terrace	24.00	0.50	12.00
uncovered terrace	28.10	0.25	7.03
10 pool	24.00	0.25	6.00
GROUND FLOOR TOTAL	226.10		160.48

